



SPRING/SUMMER 2017

# MENSWEAR

TREND BOOK  
DESIGNED BY XSIGN



**INTRODUCTION**

# Table of Contents

## Basic

- > TREND MOOD ..... 5
- > COLOUR DIRECTION ..... 6
  
- > **XSIGN TOUCH:** DAY OFF
  - > KEY ITEMS ..... 8
  
- > **XSIGN TOUCH:** WORKING
  - > KEY ITEMS ..... 23
  
- > **XSIGN TOUCH:** EVENING
  - > KEY ITEMS ..... 32
  
- > DETAILS ..... 36
- > MATERIALS ..... 40
- > PRINTS ..... 41
- > SHAPES RECAP ..... 43

## Urban

- > TREND MOOD ..... 53
- > COLOUR DIRECTION ..... 54
  
- > **XSIGN TOUCH:** DAY OFF
  - > KEY ITEMS ..... 56
  
- > **XSIGN TOUCH:** EVENING
  - > KEY ITEMS ..... 66
  
- > DETAILS ..... 76
- > MATERIALS ..... 79
- > PRINTS ..... 80
- > SHAPES RECAP ..... 81

## Dreamer

- > TREND MOOD ..... 88
- > COLOUR DIRECTION ..... 89
  
- > **XSIGN TOUCH:** DAY OFF
  - > KEY ITEMS ..... 91
  
- > **XSIGN TOUCH:** WORKING
  - > KEY ITEMS ..... 100
  
- > **XSIGN TOUCH:** EVENING
  - > KEY ITEMS ..... 107
  
- > DETAILS ..... 112
- > MATERIALS ..... 115
- > PRINTS ..... 116
- > SHAPES RECAP ..... 119

## INTRODUCTION

# Trends Preview

## &gt; Basic



## &gt; Urban



## &gt; Dreamer



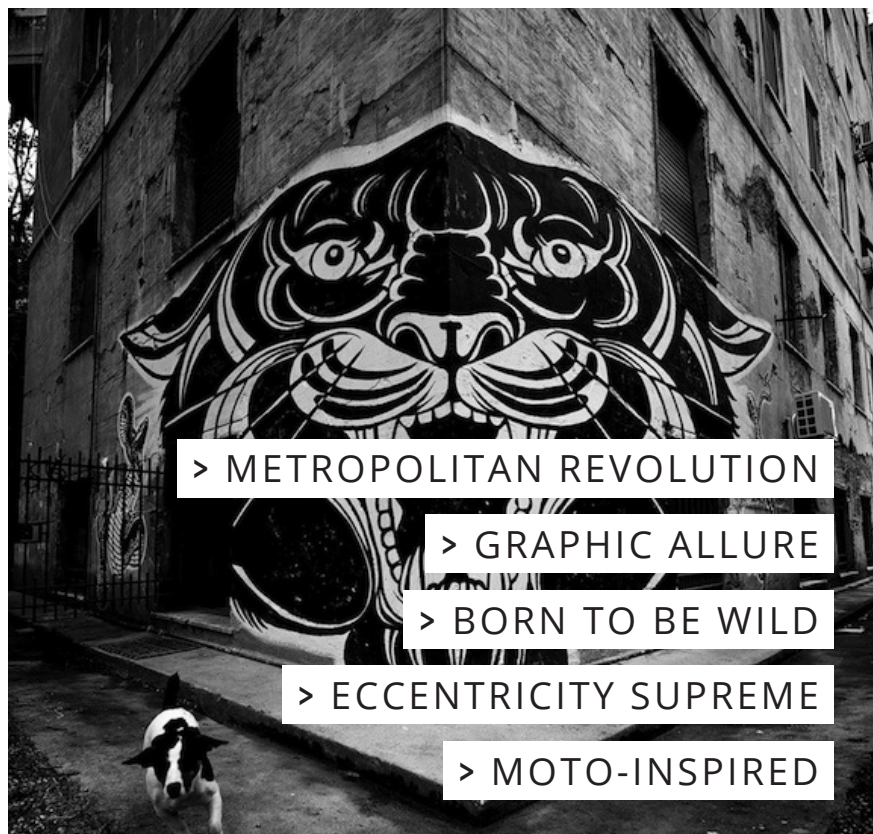


urban

**MENSWEAR TREND BOOK S/S 17**



URBAN



## Trend Mood

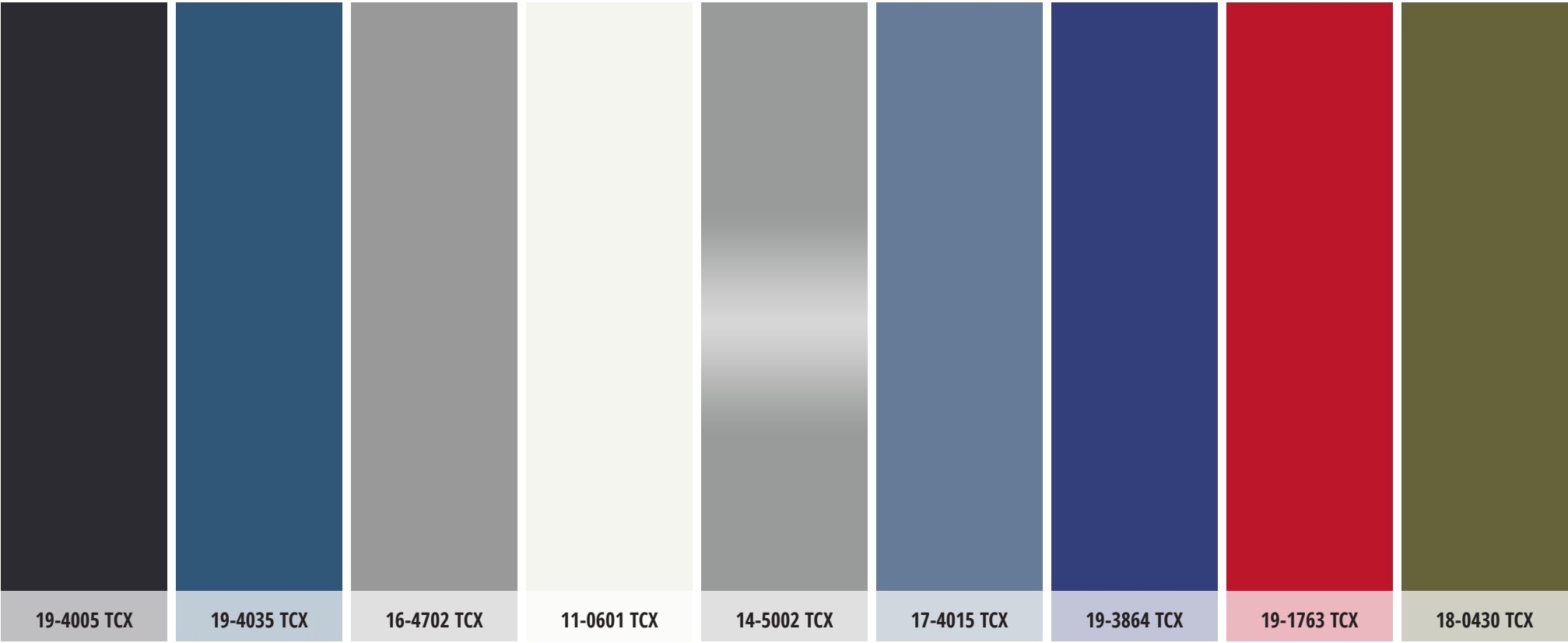
A blend between urban street style, built on graphics and worn materials, and iconic items from the rock tradition. Motifs born in the urban suburbs and raised to the level of trends with sophisticated re-workings, technical fabrics and fine leathers.



URBAN

# Colour Direction

The colour range is based on dark deep shades, that differentiate themselves through contrasts between shiny and opaque. The silver metallic details of the jewellery and appliqué, and uncommon flecks of colour, red and blue above all, stand out.



URBAN

XSIGN TOUCH

# Evening





**URBAN**  
XSIGN **TOUCH: EVENING**

## Key **Items**: essential leather jackets



> A DICIANNOVEVENTITRE



> LEON EMANUEL BLANCK



> COSTUME NATIONAL



URBAN  
XSIGN **TOUCH: EVENING**

## Key **Items**: tape detailing shirts



> DIOR HOMME



> KILGOUR



> DOLCE & GABBANA

**URBAN**  
XSIGN **TOUCH: EVENING**

# Key **Items**: slim-fit embellished biker trousers



> **COSTUME NATIONAL**



> **DIESEL BLACK GOLD**



> **BELSTAFF**



URBAN  
XSIGN TOUCH: URBAN

# Details: outerwear



> hood with drawstring



> decorative two-coloured striped trims



> quilted detailing on arms and body



> leather intarsia



> sleeve loop



> raw cut leather



URBAN  
XSIGN TOUCH: URBAN

# Details: top



> quilted elbows



> neoprene and leather details



> decorative metallic studs



> checked trims on the collar and cuffs



> coloured shirts collar and stand



> abstract reflective printings



URBAN  
XSIGN TOUCH: URBAN

# Details: trousers and pants



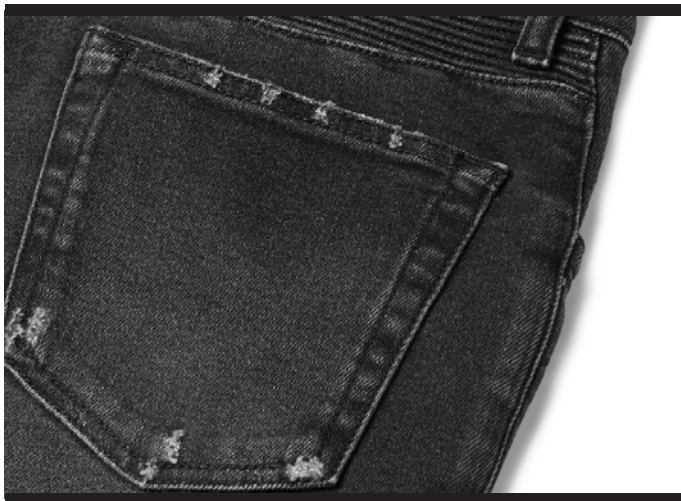
> golden metallic details



> double extra side pockets



> utility extra pockets



> distressed details



> ribbed knee panels



> zipper pockets



URBAN  
XSIGN TOUCH: URBAN

# Materials



> extra soft leather



> shining leather



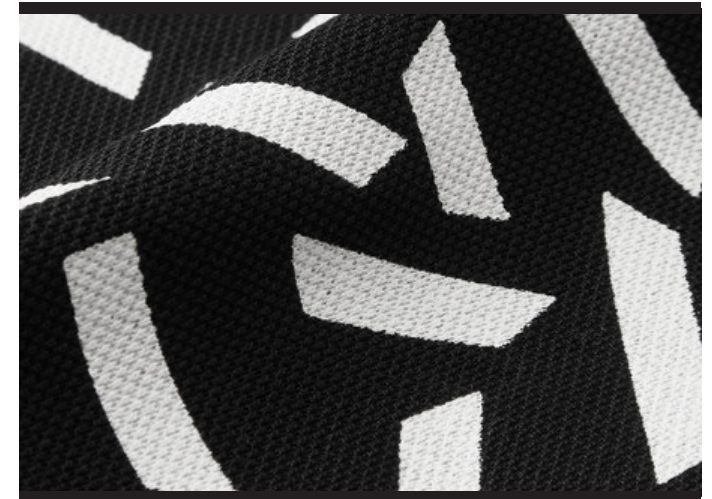
> nylon/cotton fabrics with technical finishing



> distressed detail denim



> gold-tone metallic Lurex

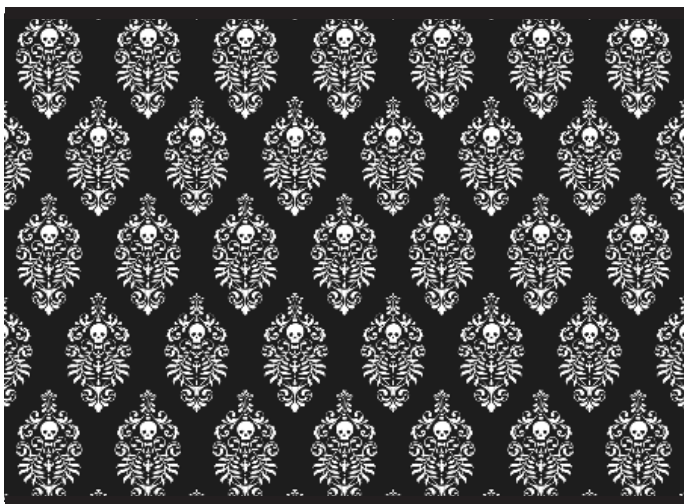


> printed cotton-piqué



URBAN  
XSIGN TOUCH: URBAN

# Prints





URBAN  
XSIGN TOUCH: URBAN

# Shapes **Recap**: outerwear



> biker jackets



> essential leather jackets



> high shine jackets



URBAN  
XSIGN TOUCH: URBAN

# Shapes **Recap**: shirts and t-shirts



> tape detailing shirts



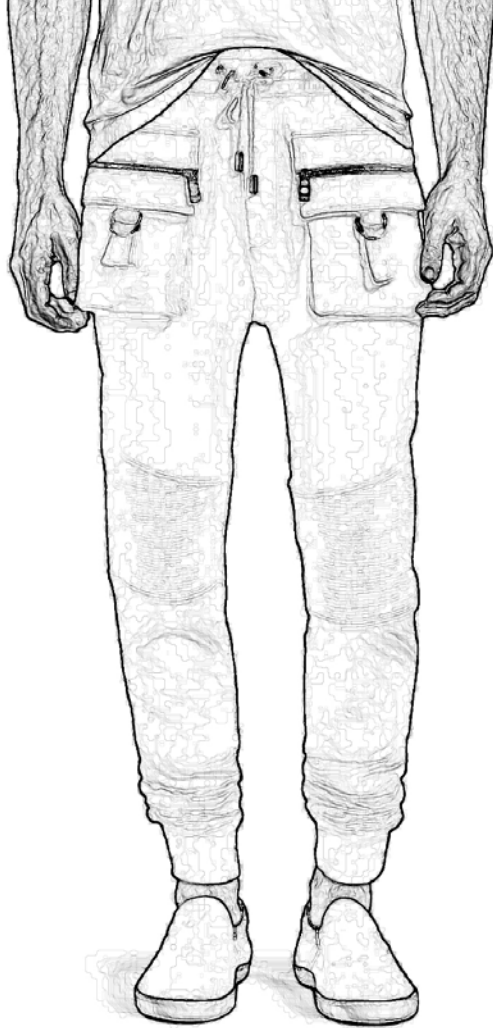
> laminated t-shirts



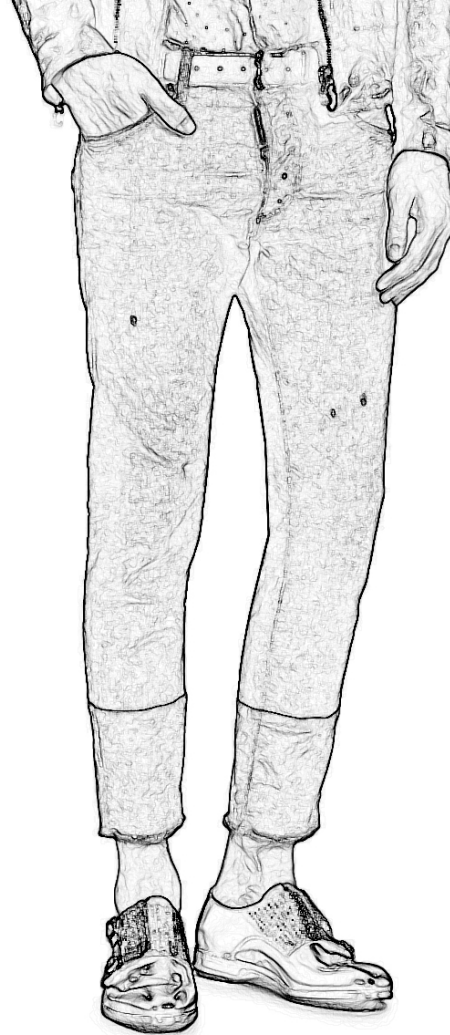
> graphic print t-shirts

URBAN  
XSIGN TOUCH: URBAN

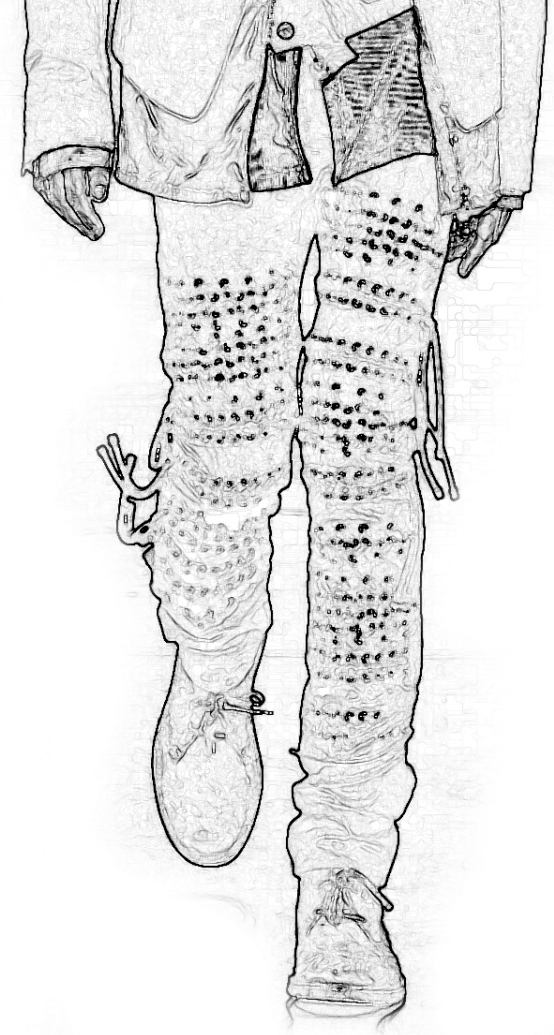
# Shapes **Recap**: trousers and pants



> slim-fit cargo pants



> cuff jeans



> slim-fit embellished biker trousers